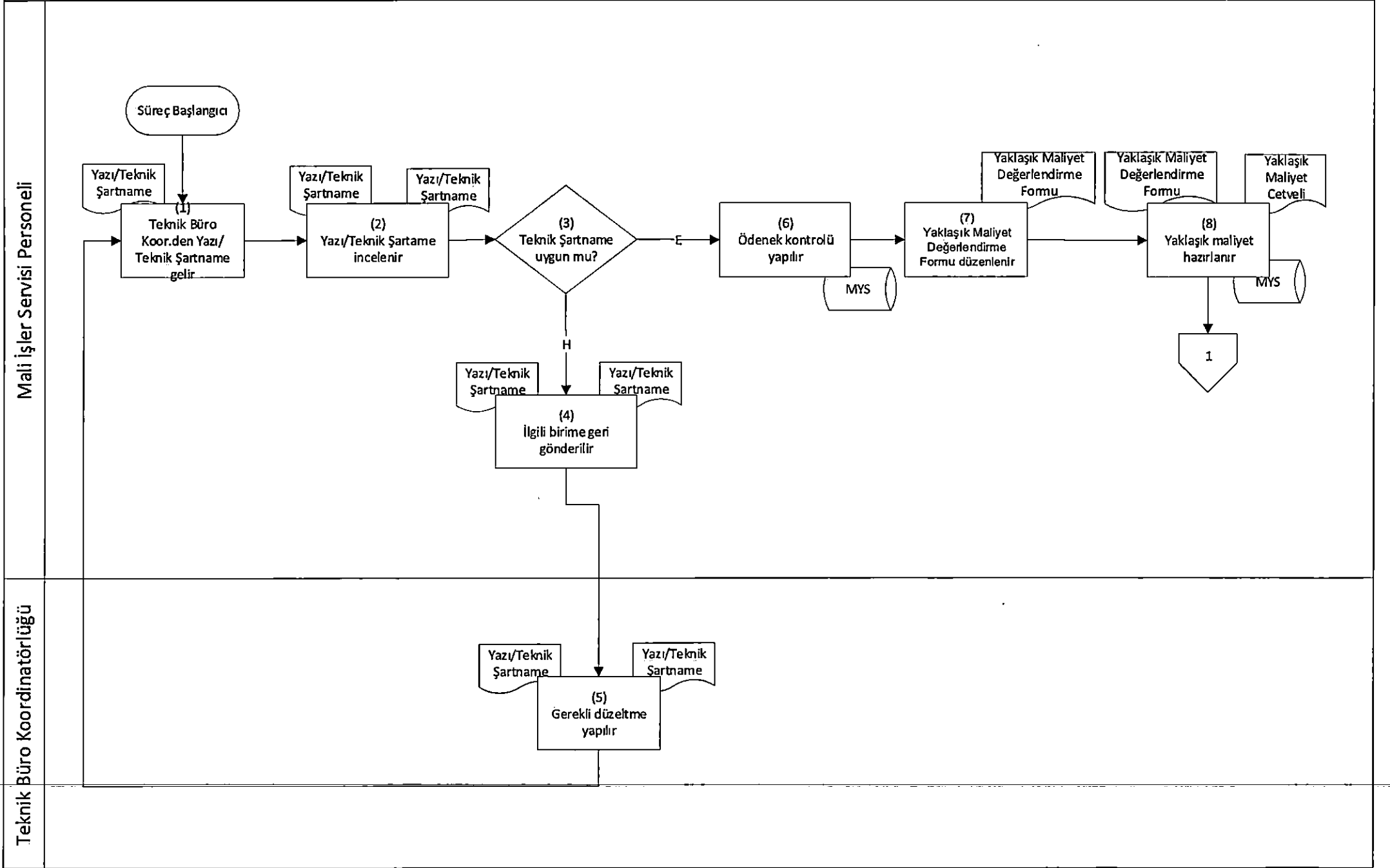
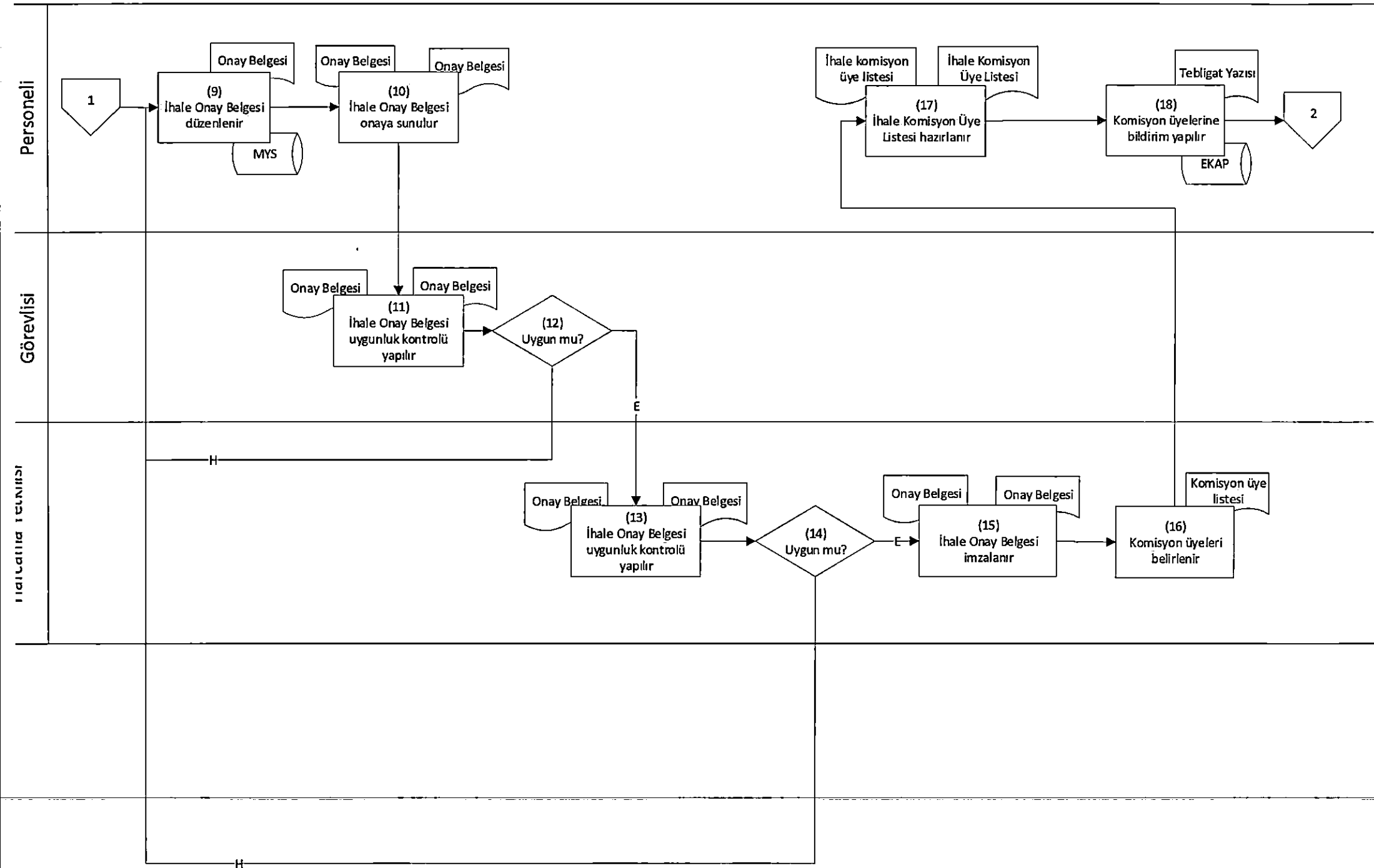


Açık İhale İşlemleri Süreci

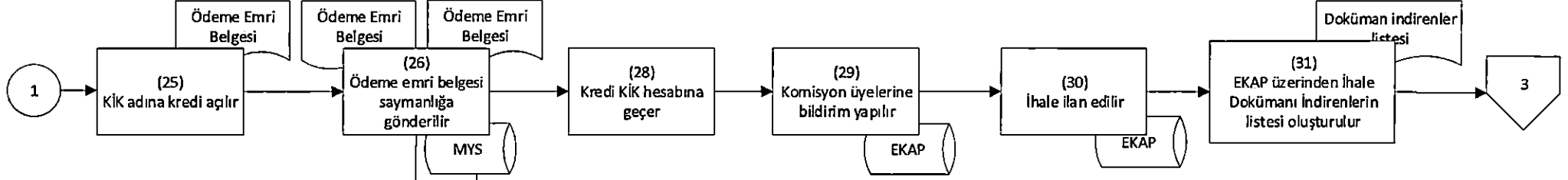
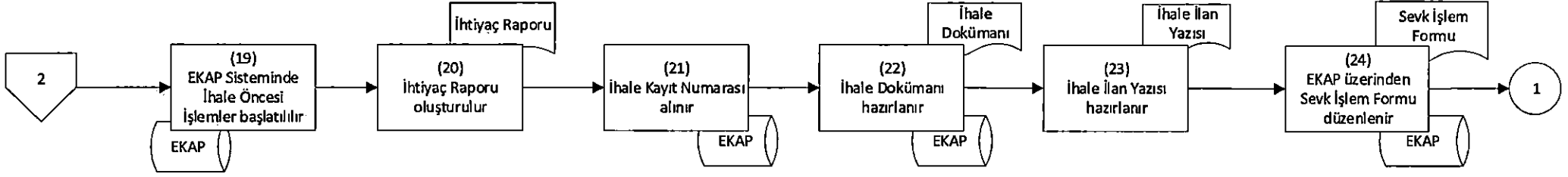


İK İHALE İŞLEMİ SURECİ

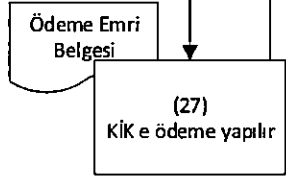


Açık İhale İşlemleri Süreci

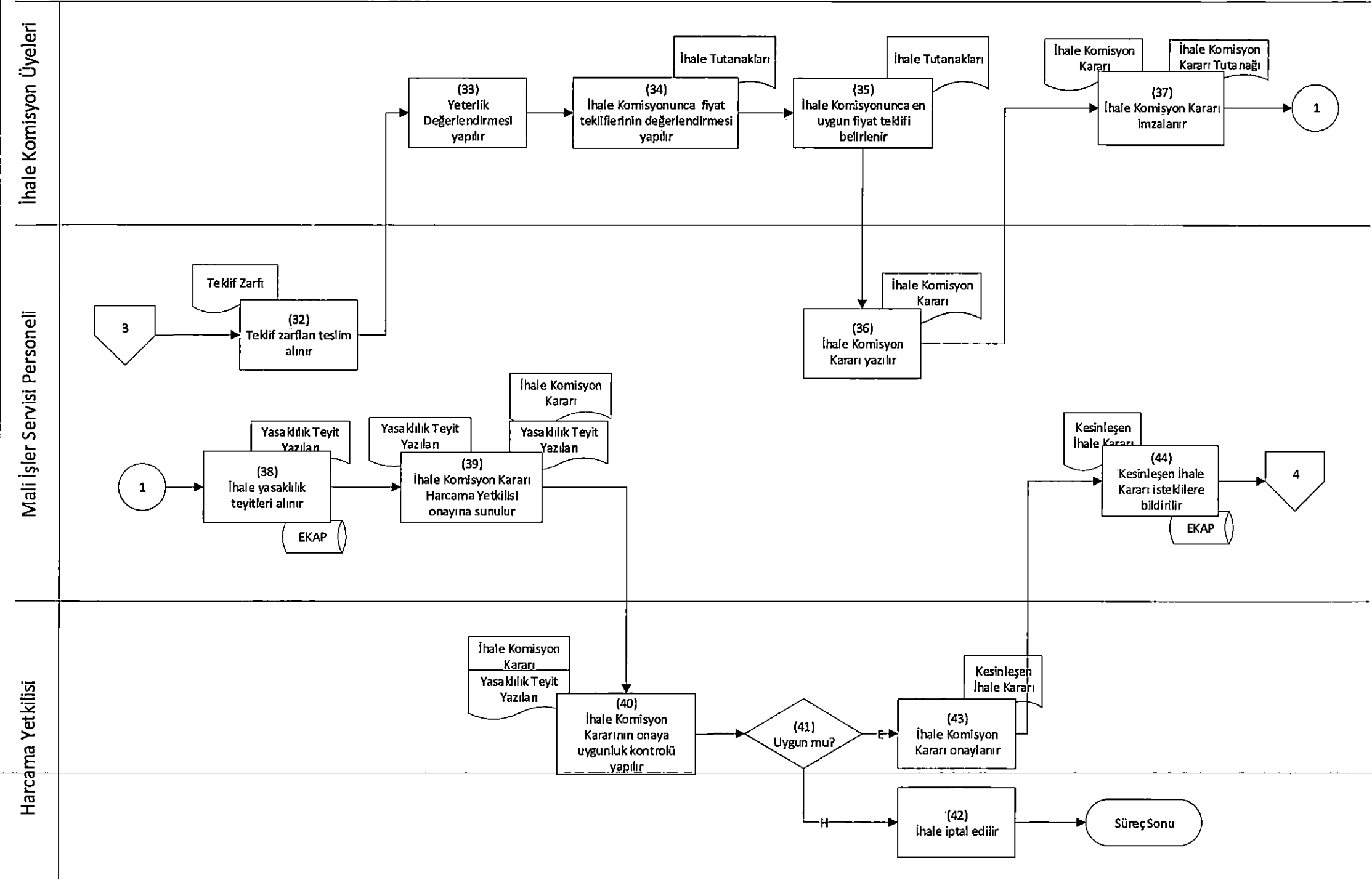
Mali İşler Servisi Personeli



Muhasebe Müdürüğü Personeli



Açık İhale İşlemleri Süreci

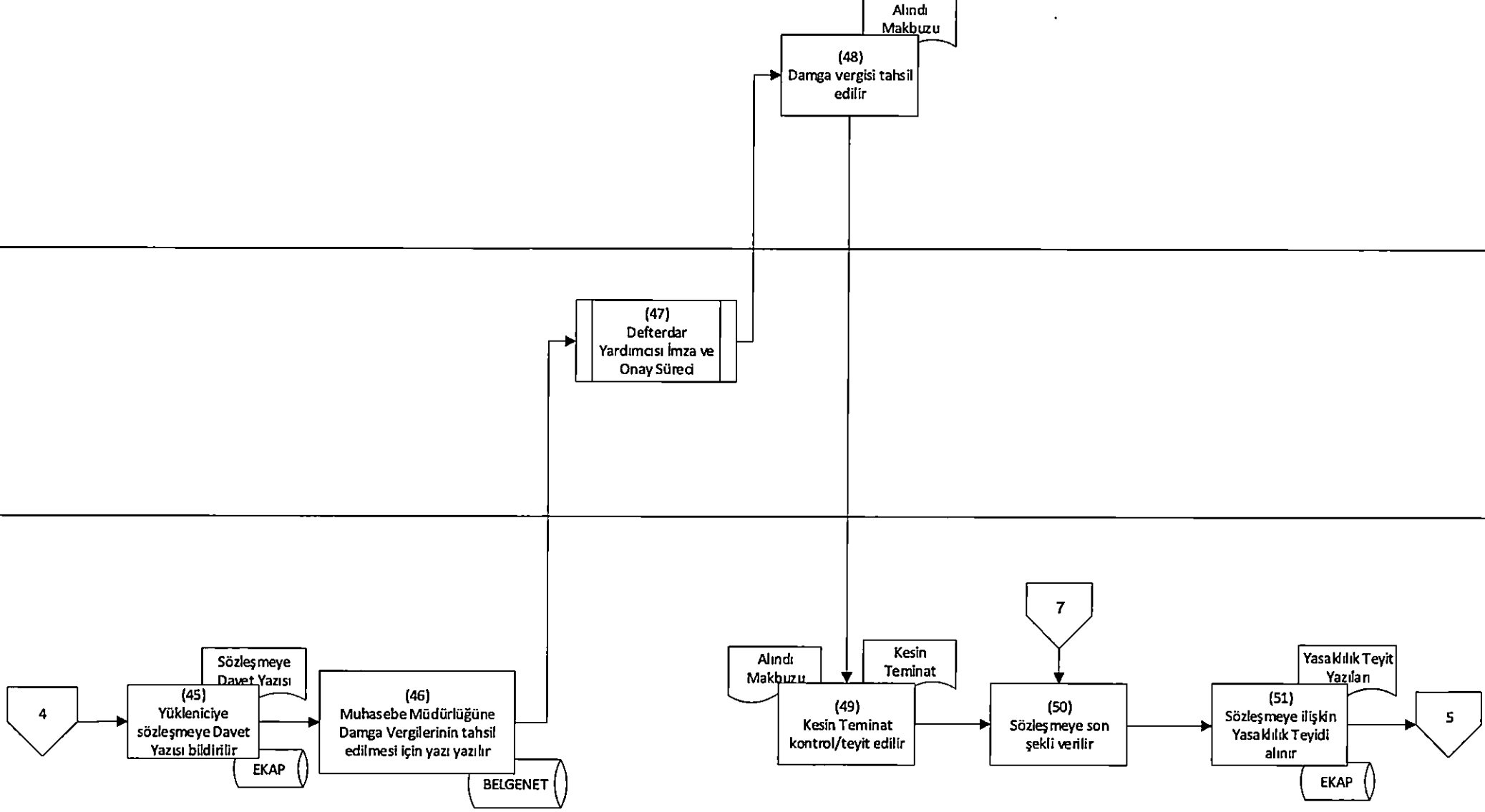


Açık İhale İşlemleri Süreci

Muhasebe Müdürlüğü
Personeli

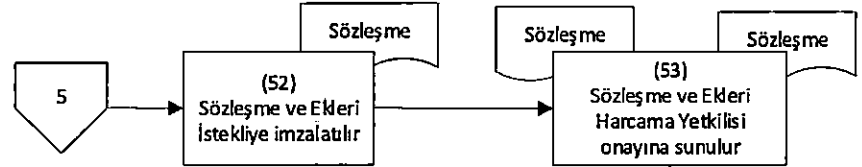
Gerçekleştirme Görevlisi

Mali İşler Servisi Personeli

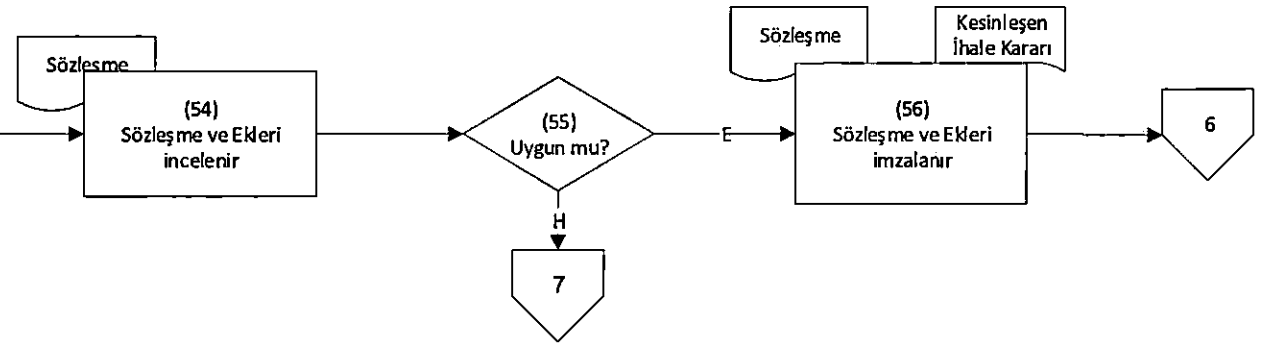


Açık İhale İşlemleri Süreci

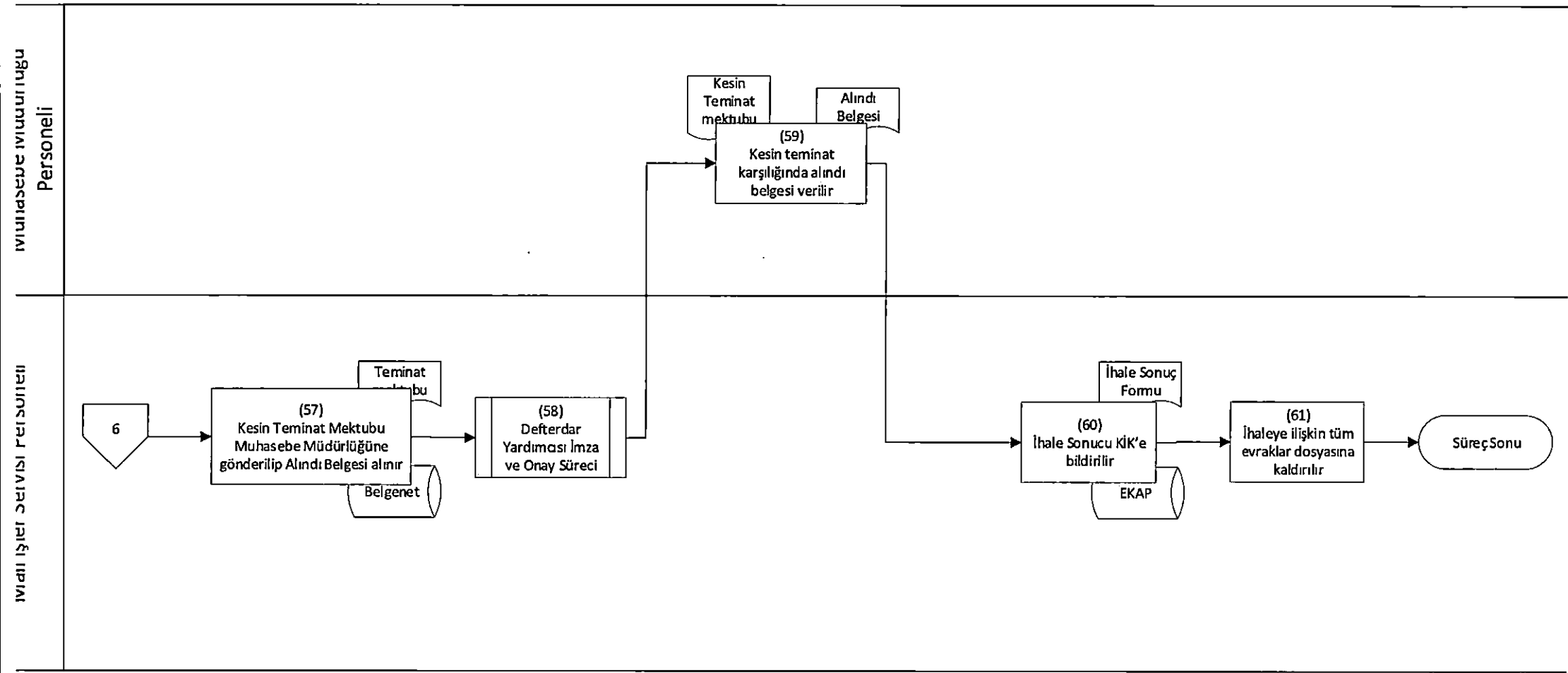
Mali İşler Servisi Personeli

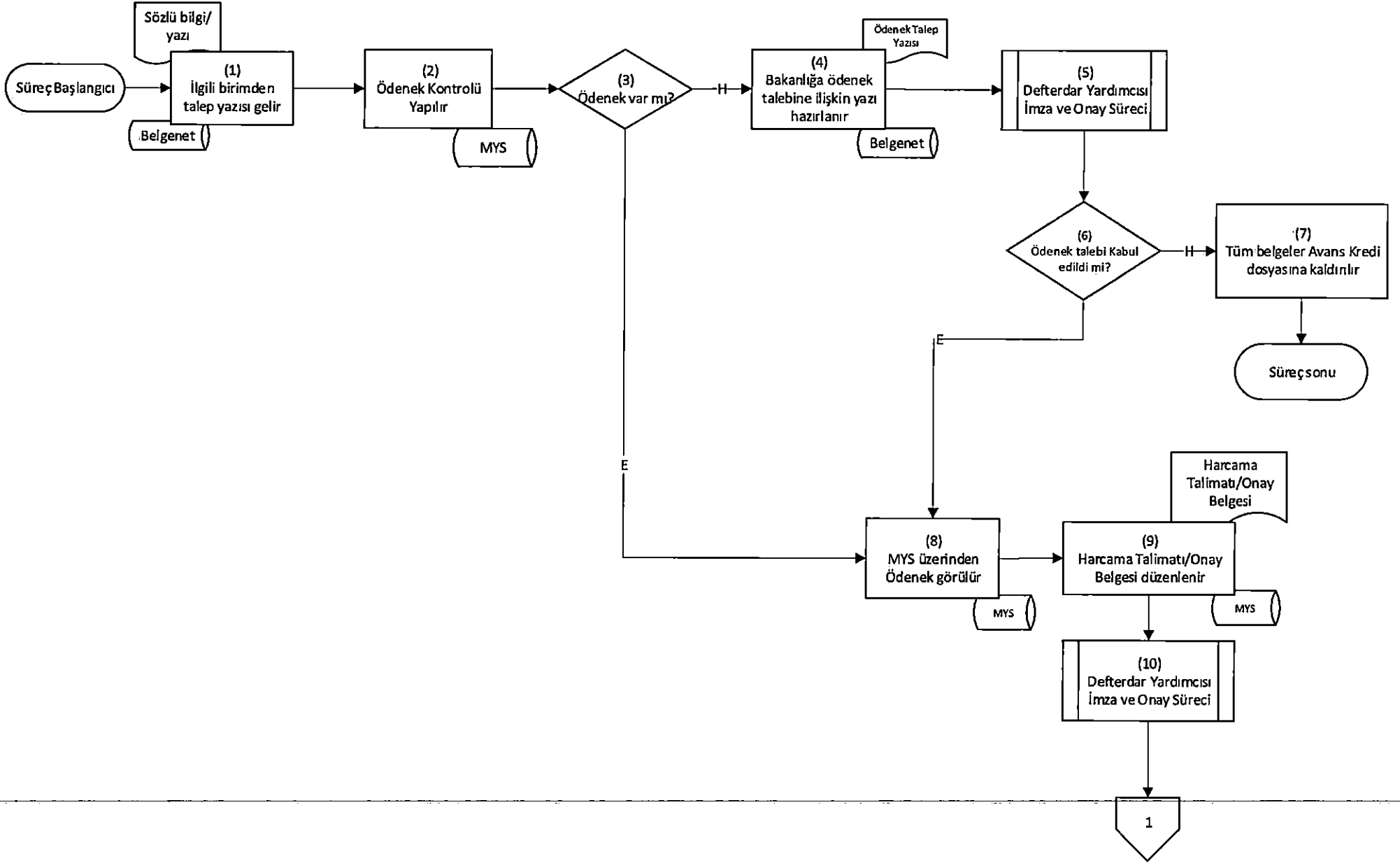


Harcama Yetkilisi



Açık İhale İşlemleri Süreci



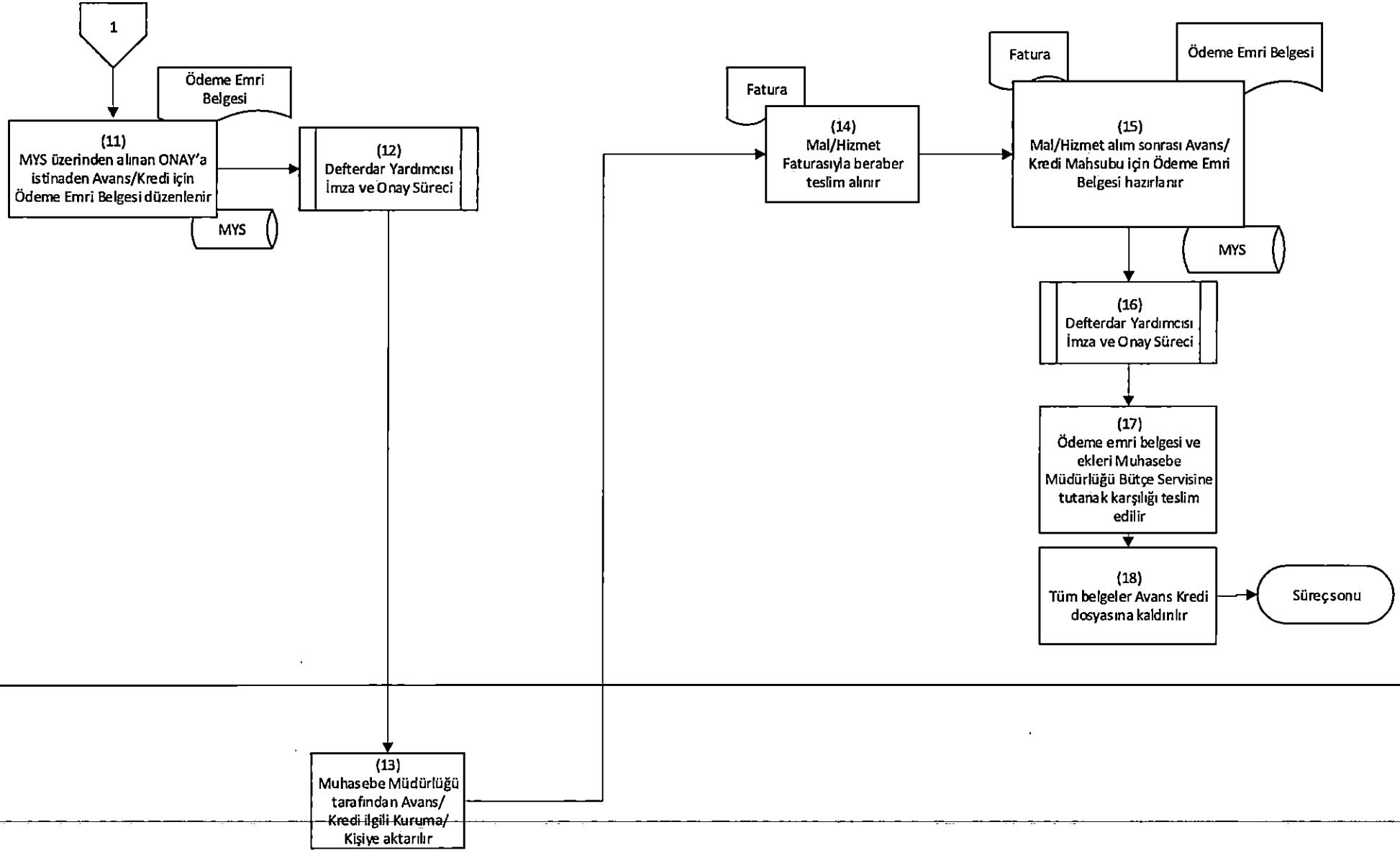


Avans ve Kredi İşlemleri Süreci

2/2

Mali ve İdari İşler Servisi Personeli

Muhasebe Müdürlüğü
Bütçe Giderleri Servisi
Personeli

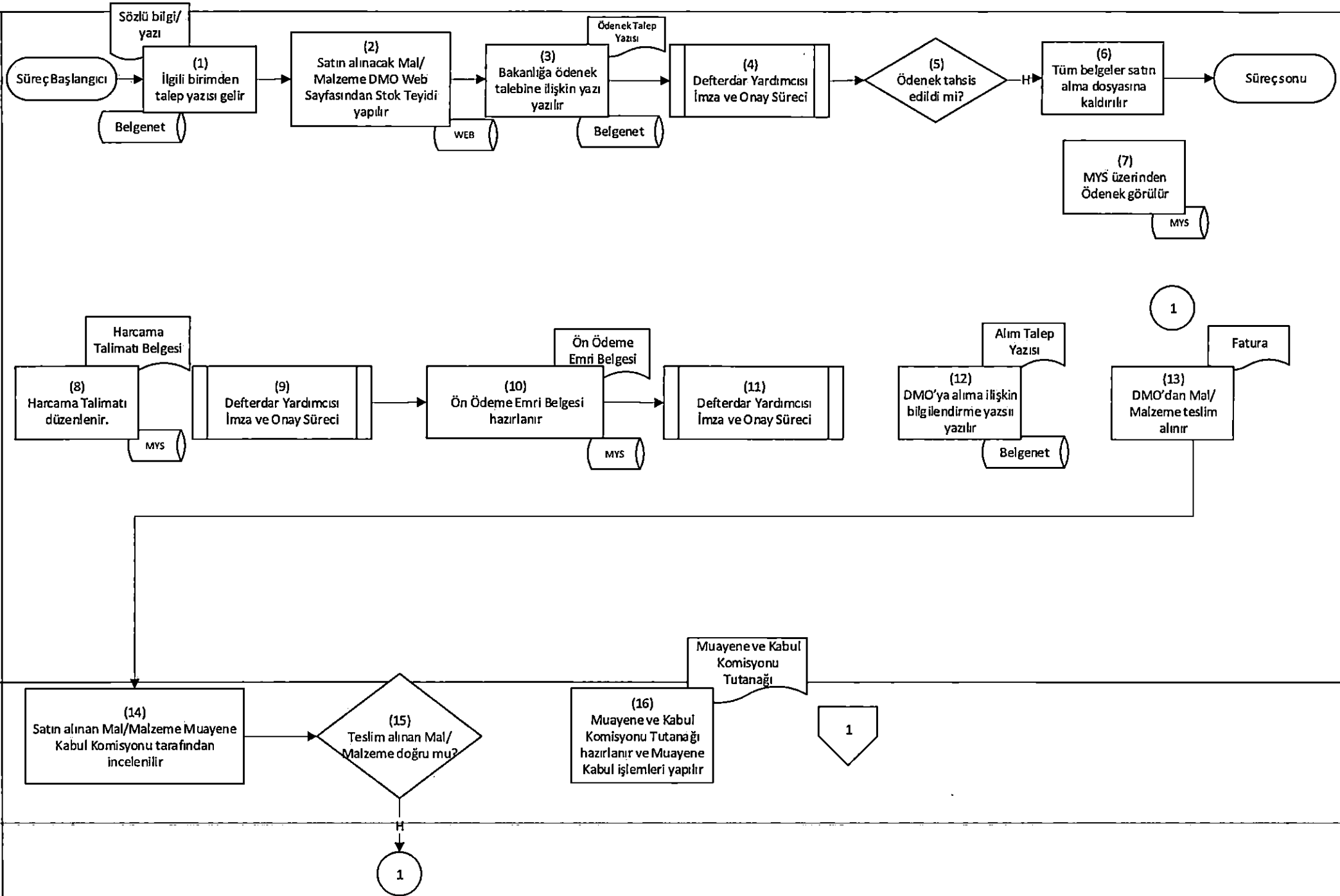


3.5.3 DMO'dan Kredili Mal ve Malzeme Alımı ve Taşınır Mal İşlemleri Süreci

1/

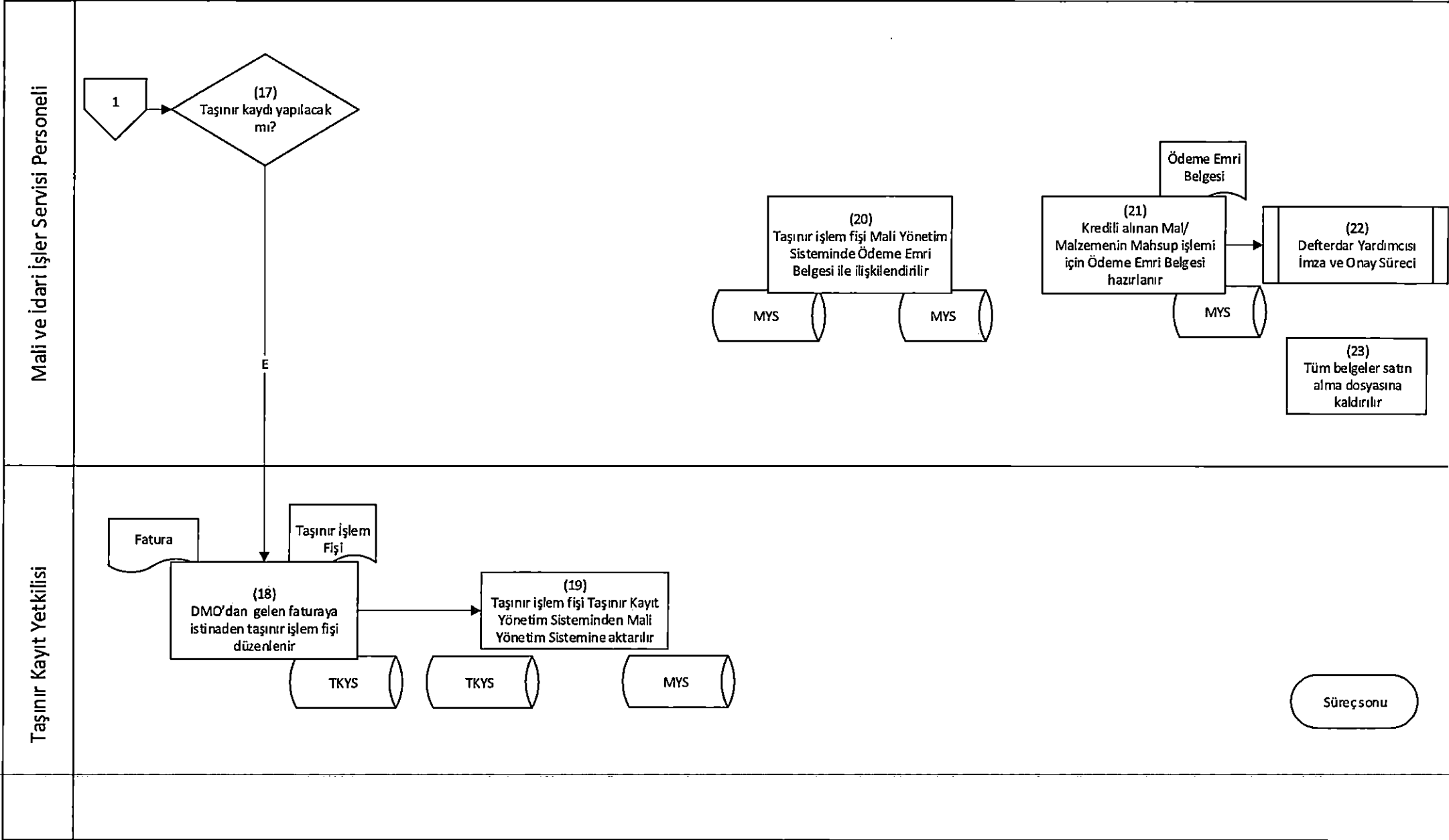
Mali ve İdari İşler Servisi Personeli

Muayene Kabul Komisyonu

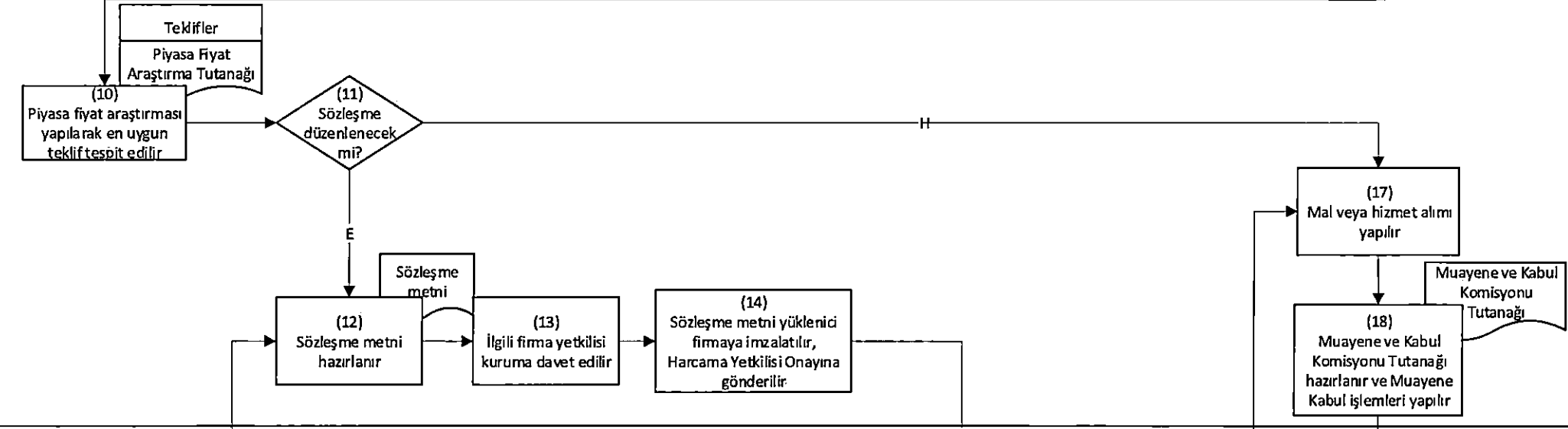
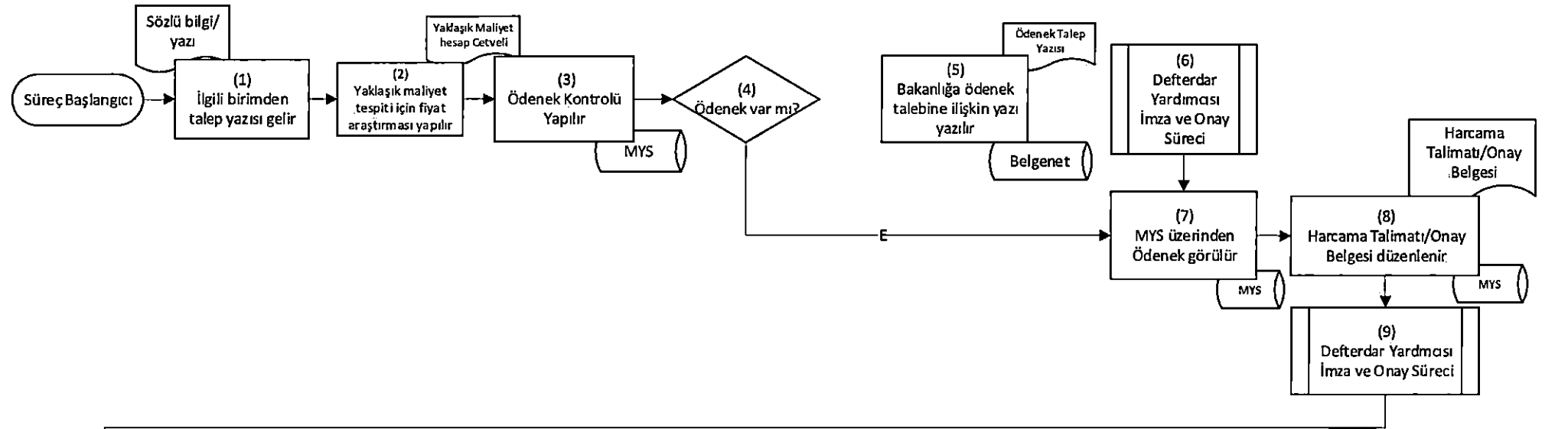


3.5.3 DMO'dan Kredili Mal ve Malzeme Alımı ve Taşınır Mal İşlemleri Süreci

2/2

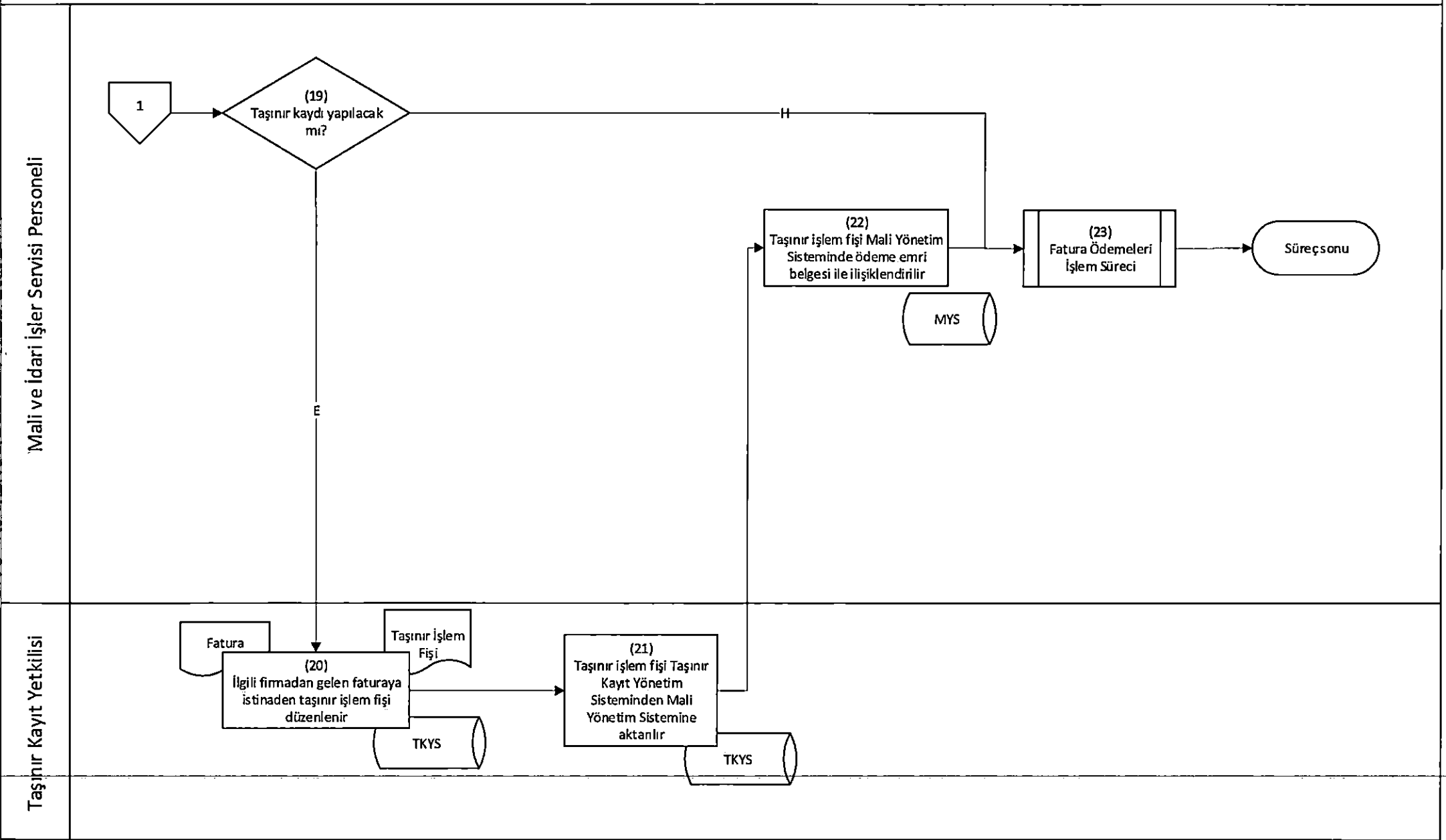


Mali ve İdari İşler Servisi Personeli



Defterdar Yardımcısı

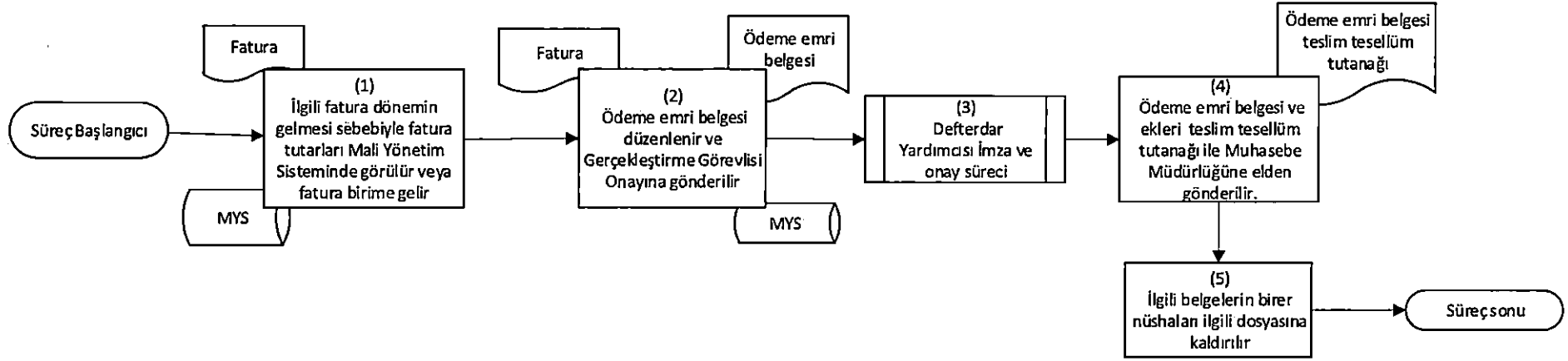
3.5.4 Doğrudan Temin İşlemleri Süreci



3.5.5 Fatura Ödemeleri İşlem Süreci

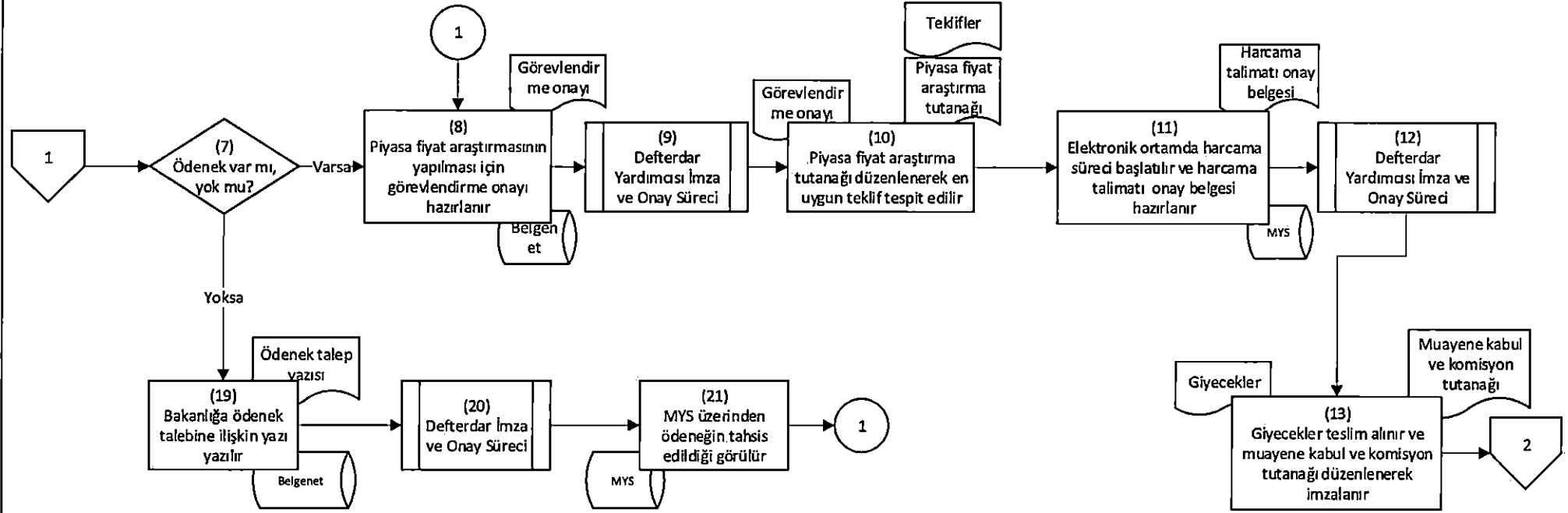
1

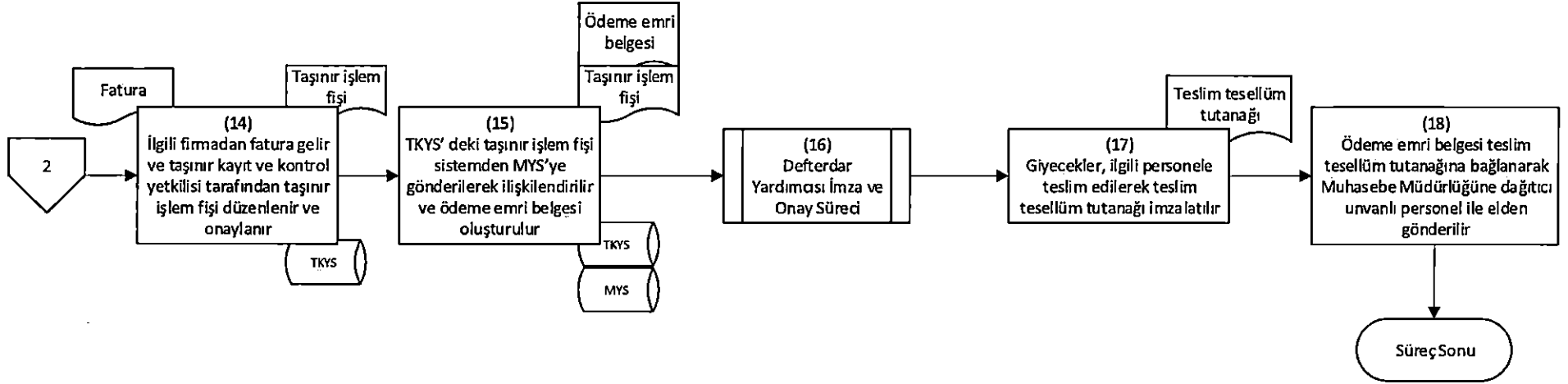
Mali ve İdari İşler Servisi Personeli



3.5.6 Giyecek Yardımı İşlem Süreci

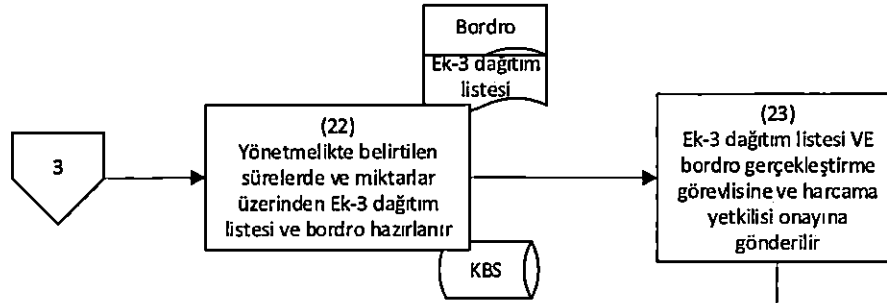
Mali İşler Servisi Personeli



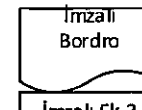
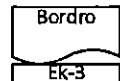
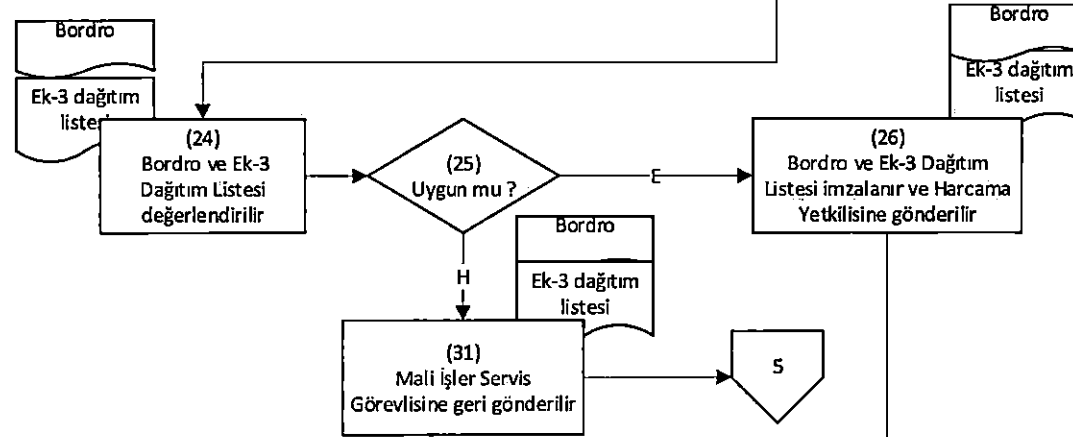


3.5.6 Giyecek Yardımı İşlem Süreci

Mali İşler Servisi Personeli

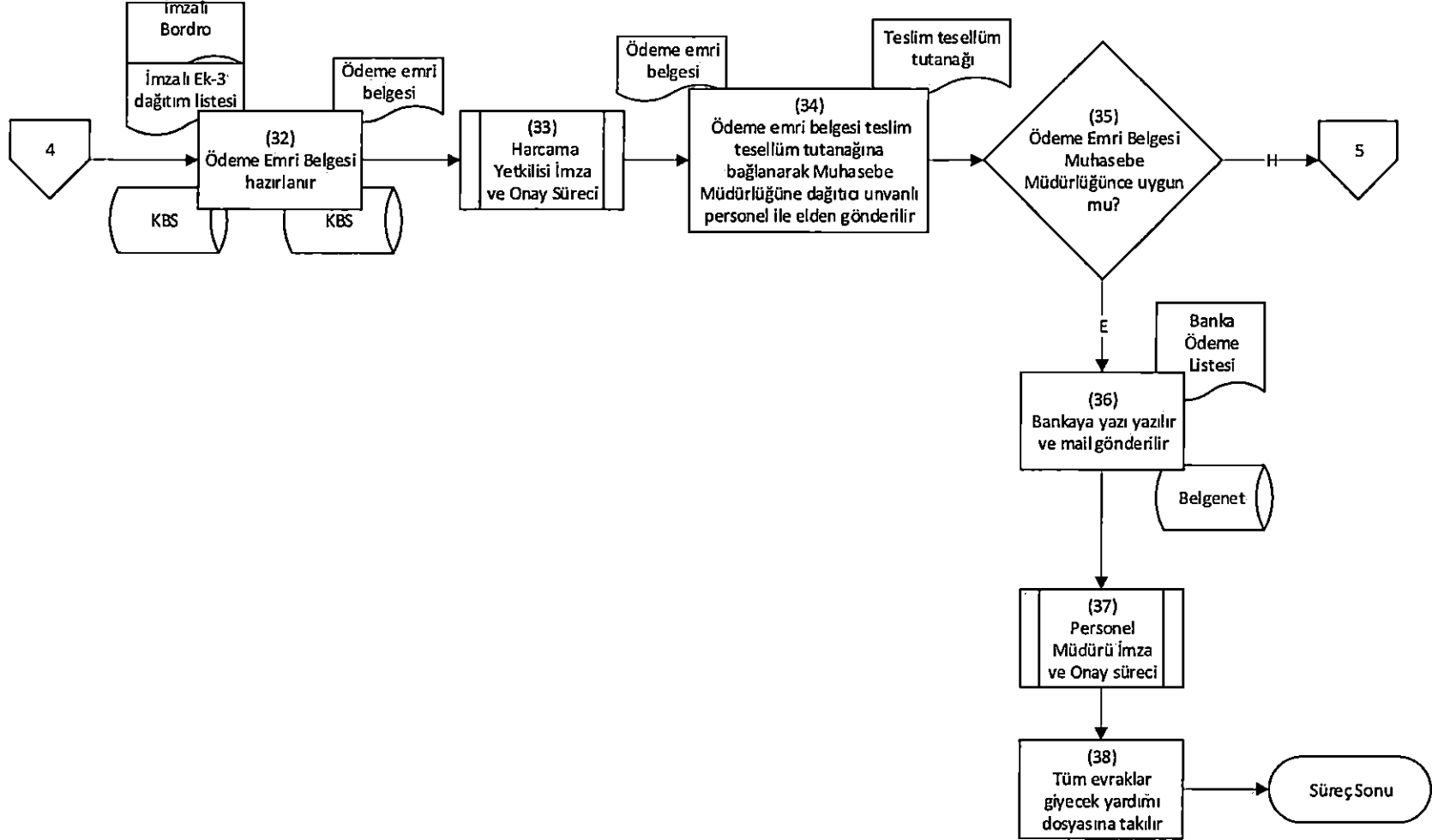


Gerçekleştirme Görevlisi



3.5.6 Giyecek Yardımı İşlem Süreci

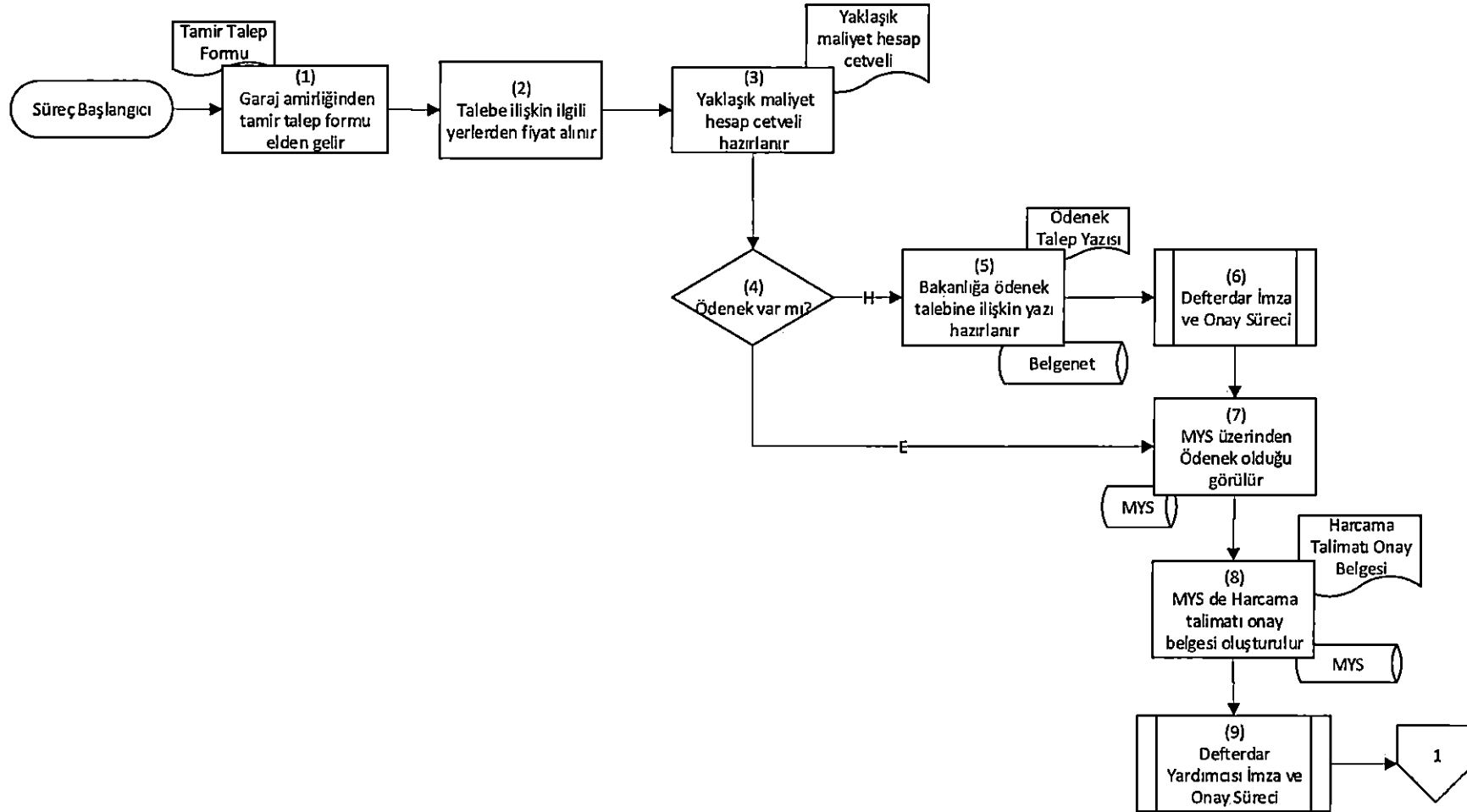
Mali İşler Servisi Personeli



3.5.7 Hizmet Araçları Bakım Onarım İşlemleri Süreci

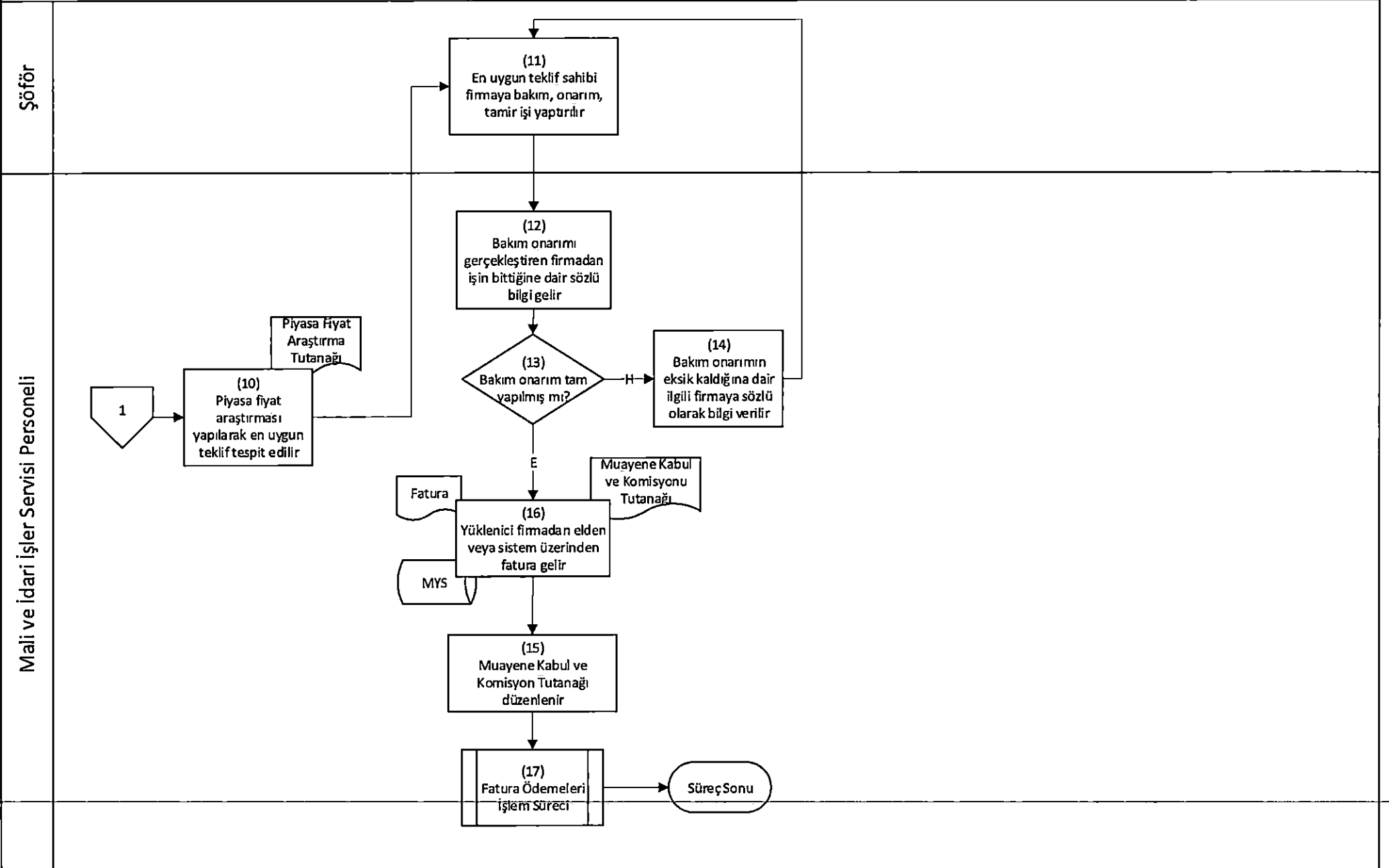
1/2

Mali ve İdari İşler Servisi Personeli



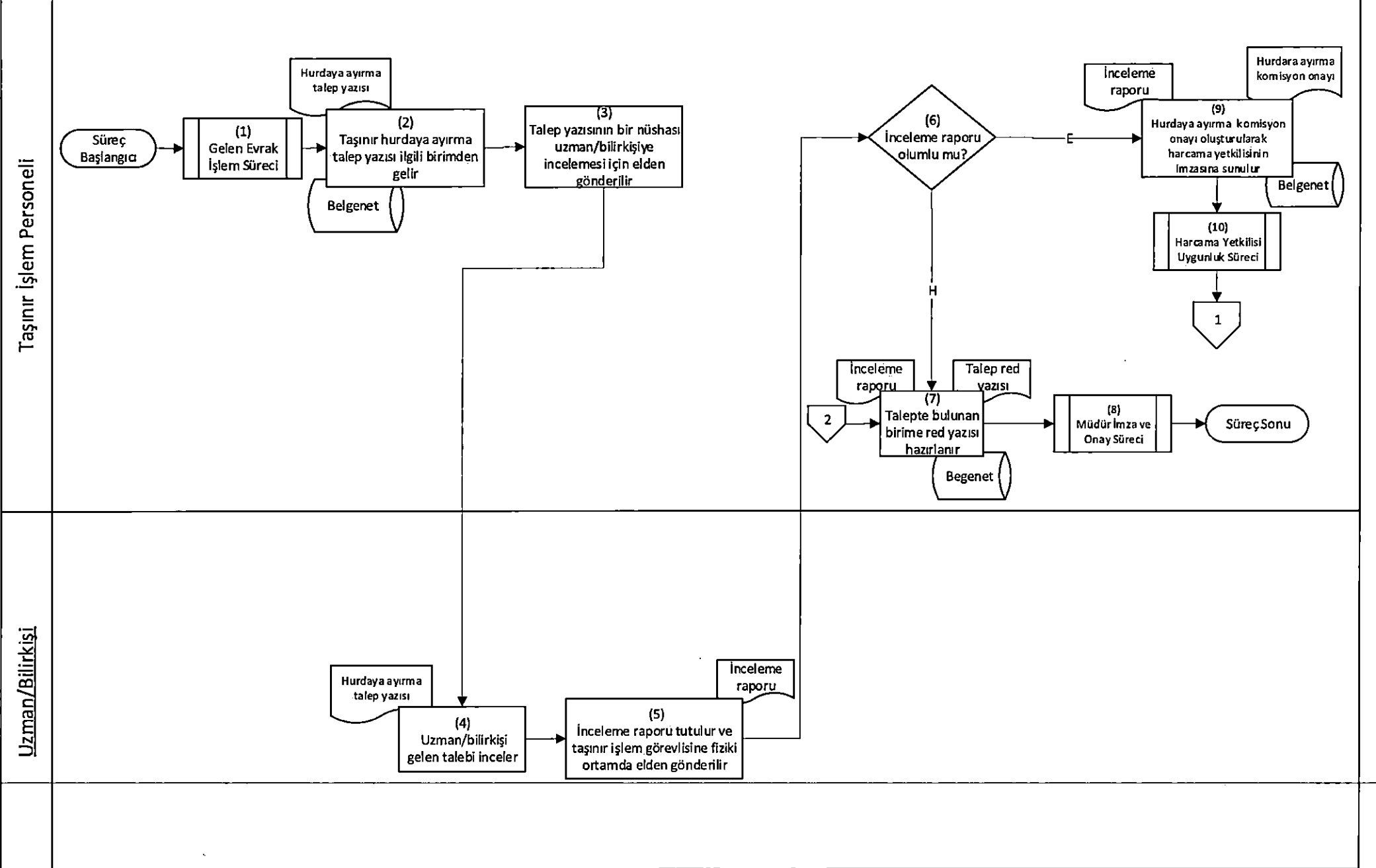
3.5.7 Hizmet Araçları Bakım Onarım İşlemleri Süreci

2/2



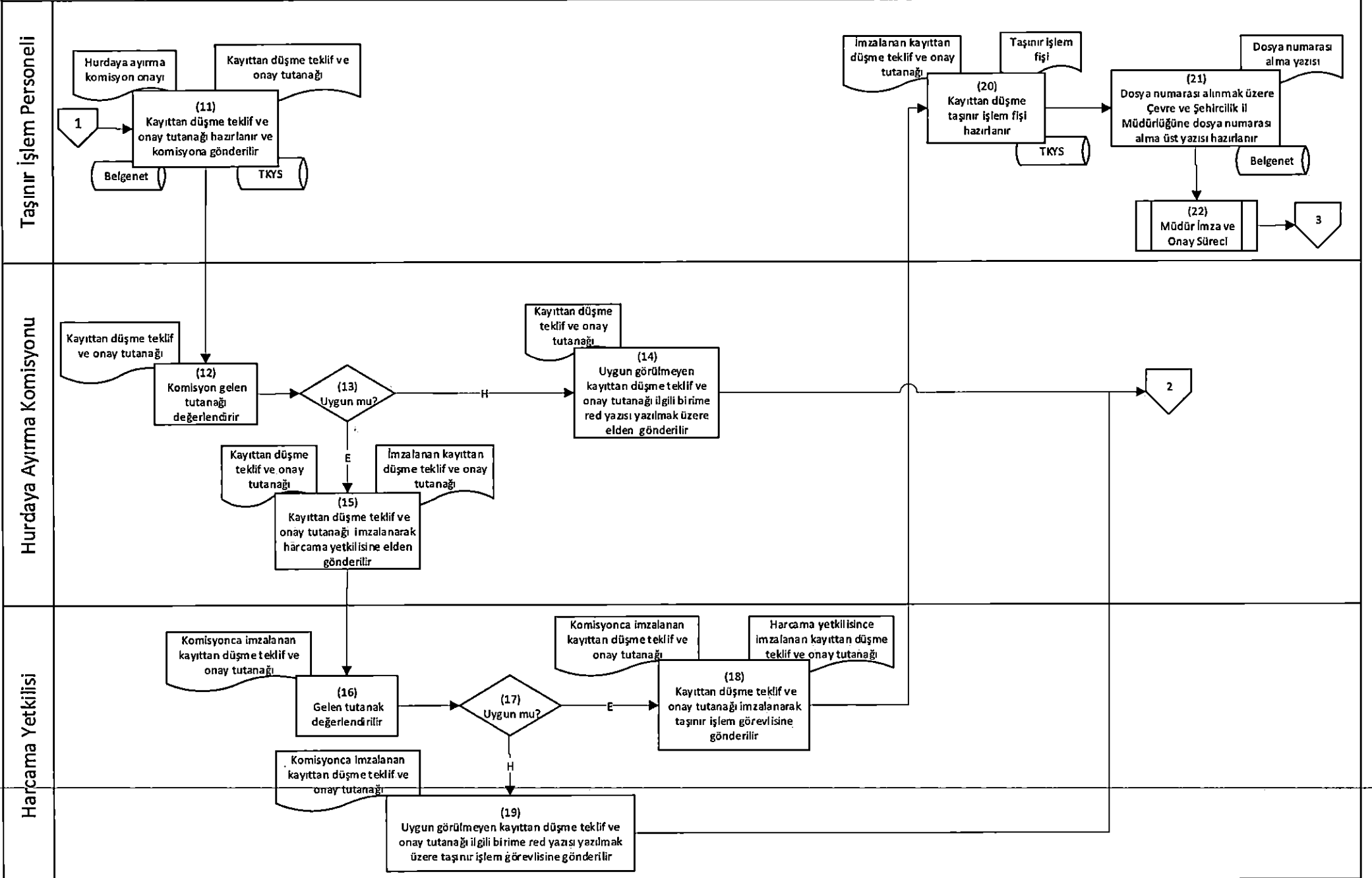
3.5.8 Hurdaya Ayrılan Taşınırın İmhası İşlem Süreci

1/3



3.5.8 Hurdaya Ayrılan Taşının İmhası İşlem Süreci

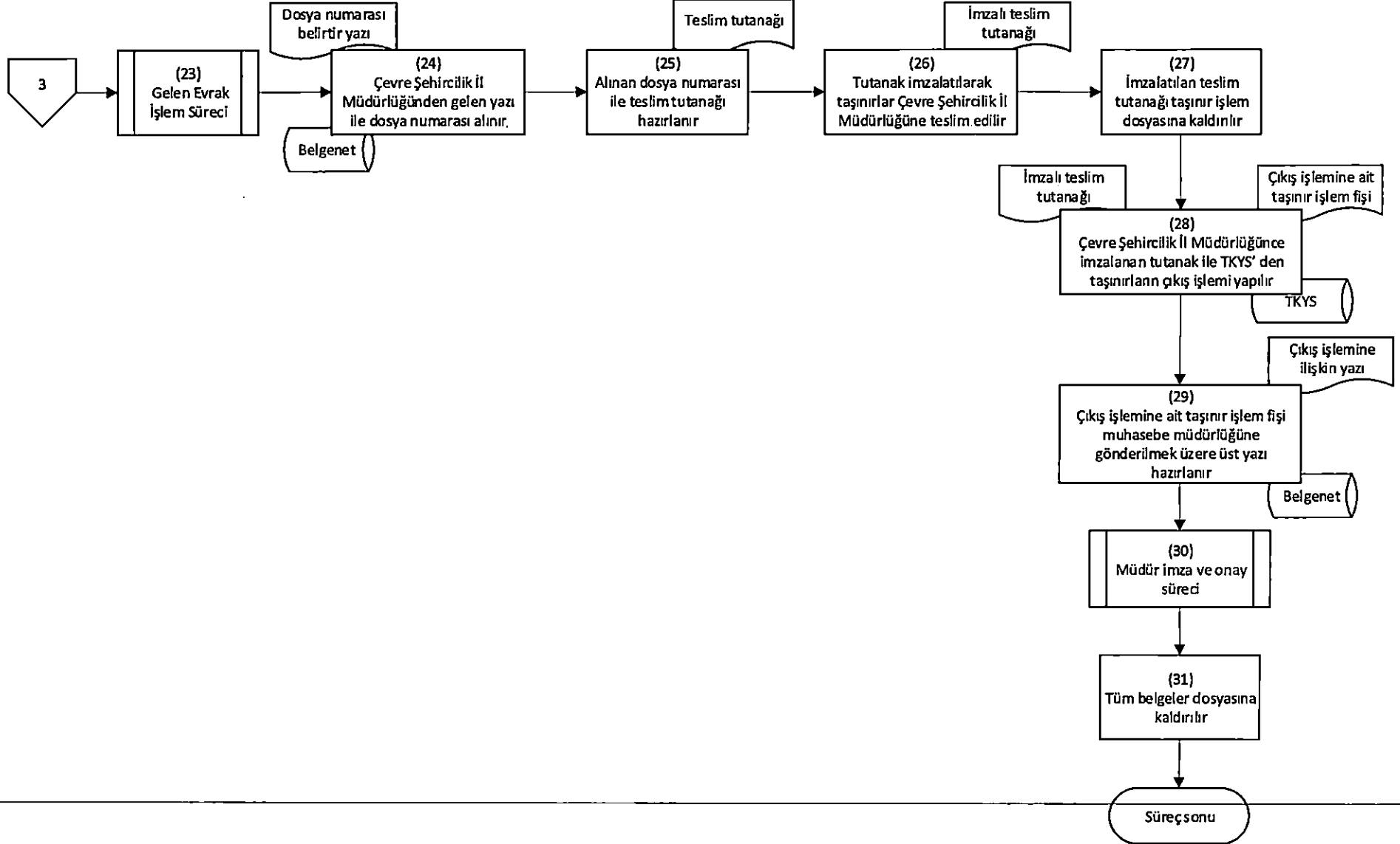
2/3



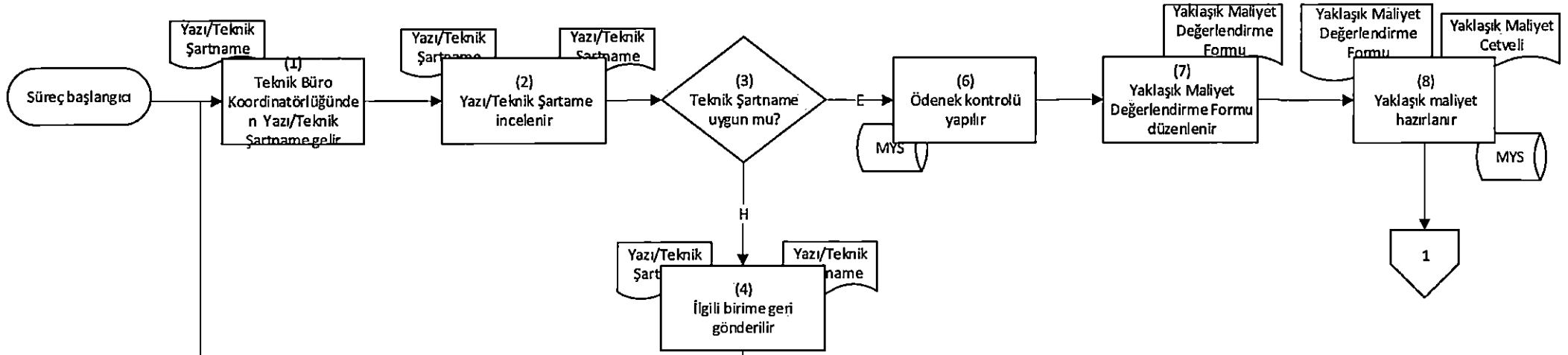
3.5.8 Hurdaya Ayrılan Taşının İmhası İşlem Süreci

3/3

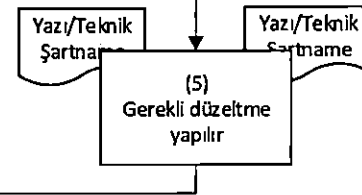
Taşınır İşlem Personeli



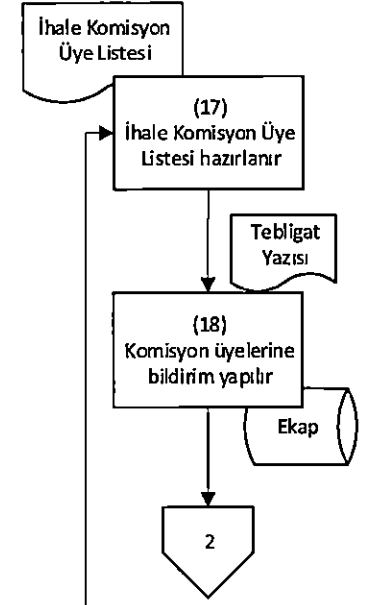
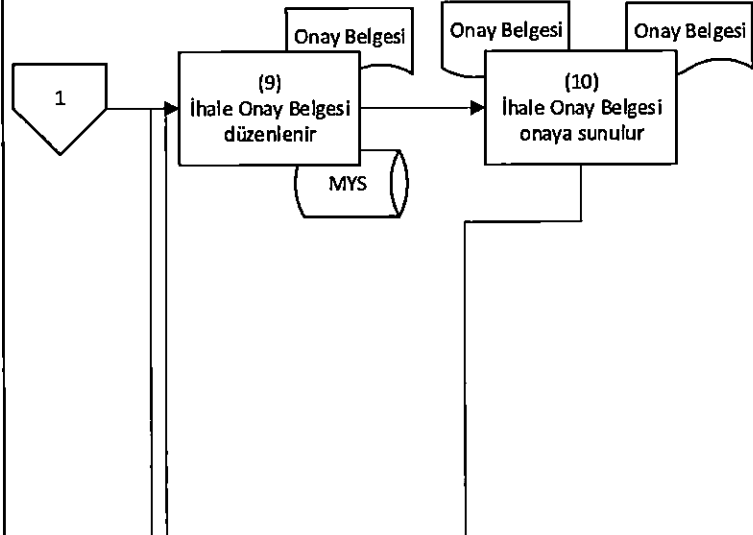
Mali İşler Servisi Personeli



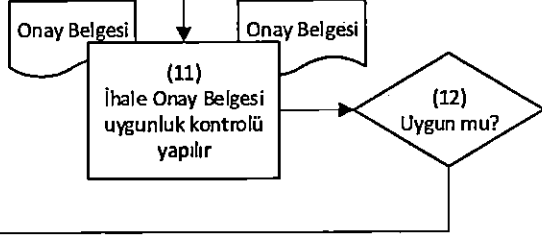
Teknik Büro Koordinatörlüğü



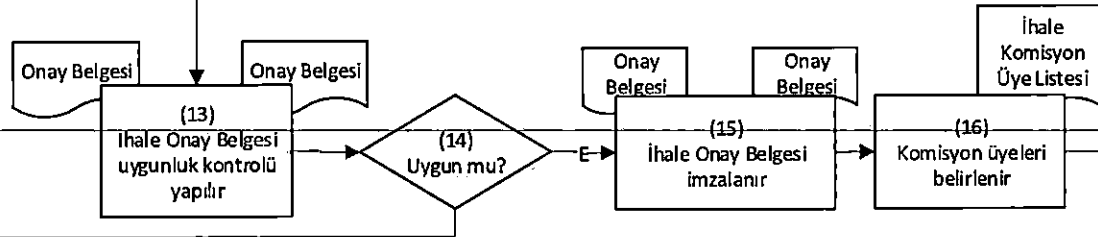
Mali İşler Servisi Personeli

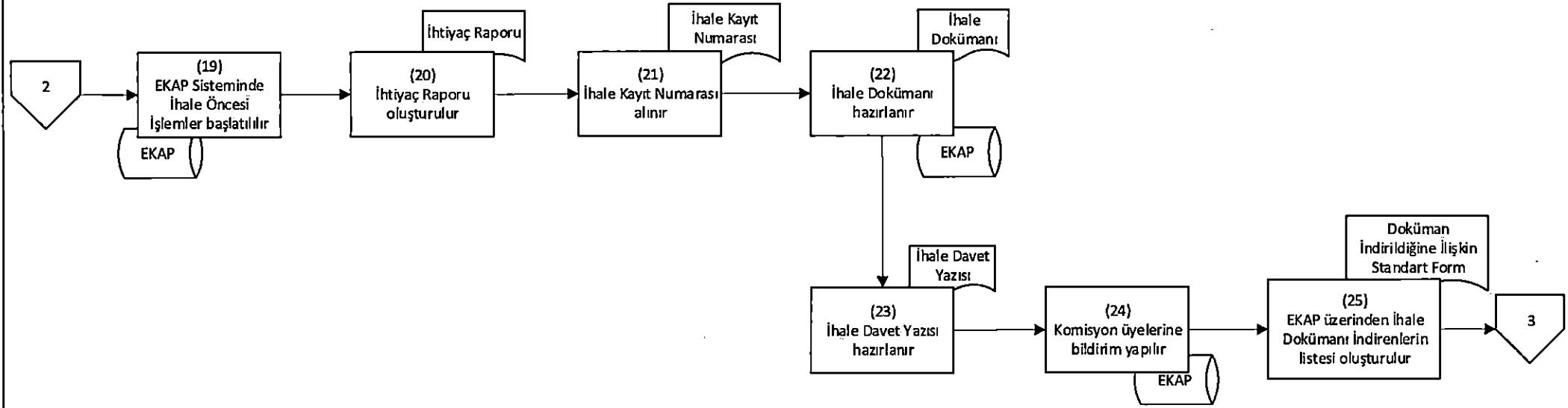


Gerçekleştirme Görevlisi



Harcama Yetkilisi





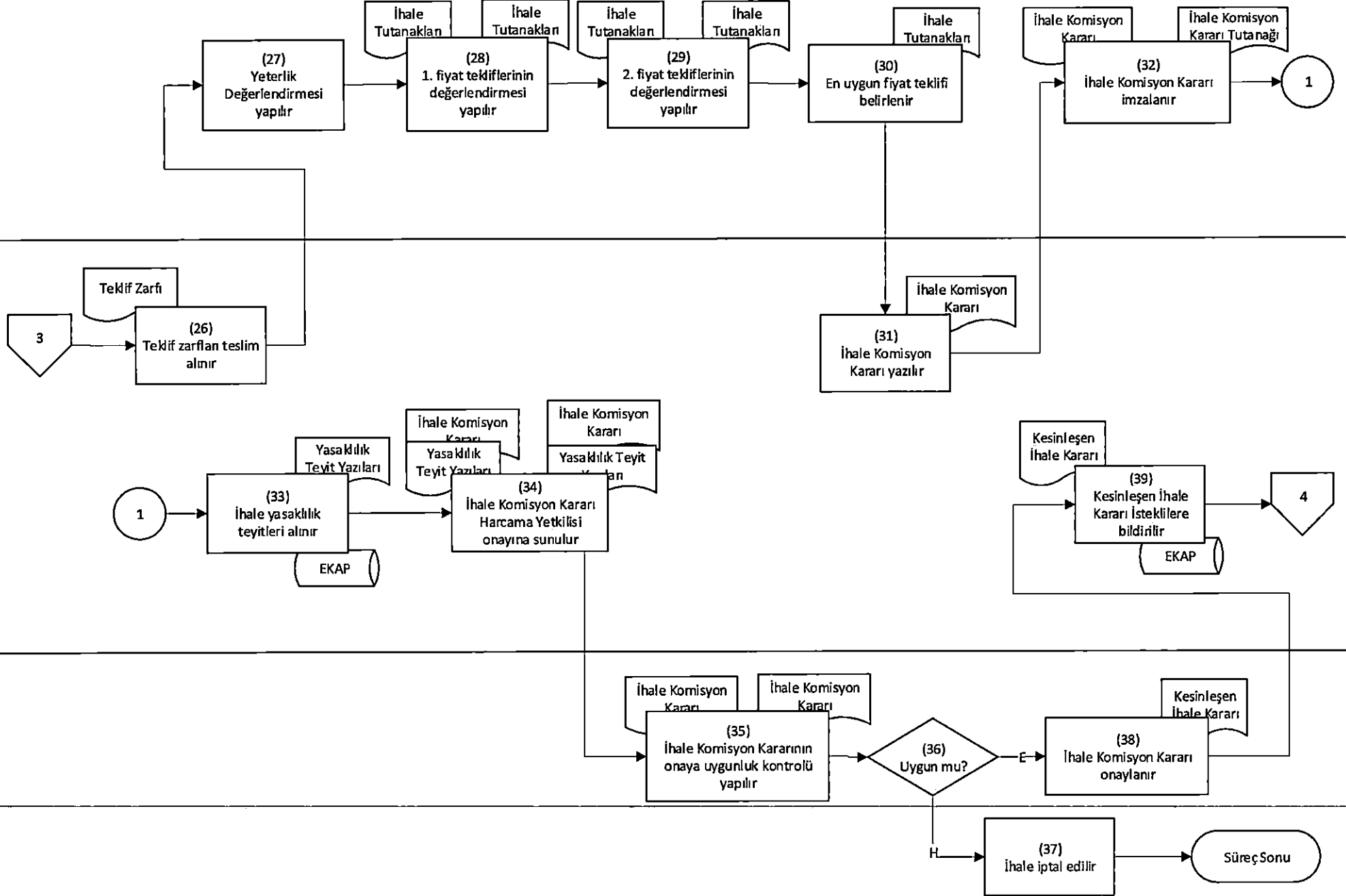
Pazarlık Usulü İhale İşlemleri Süreci

4/6

İhale Komisyon Üyeleri

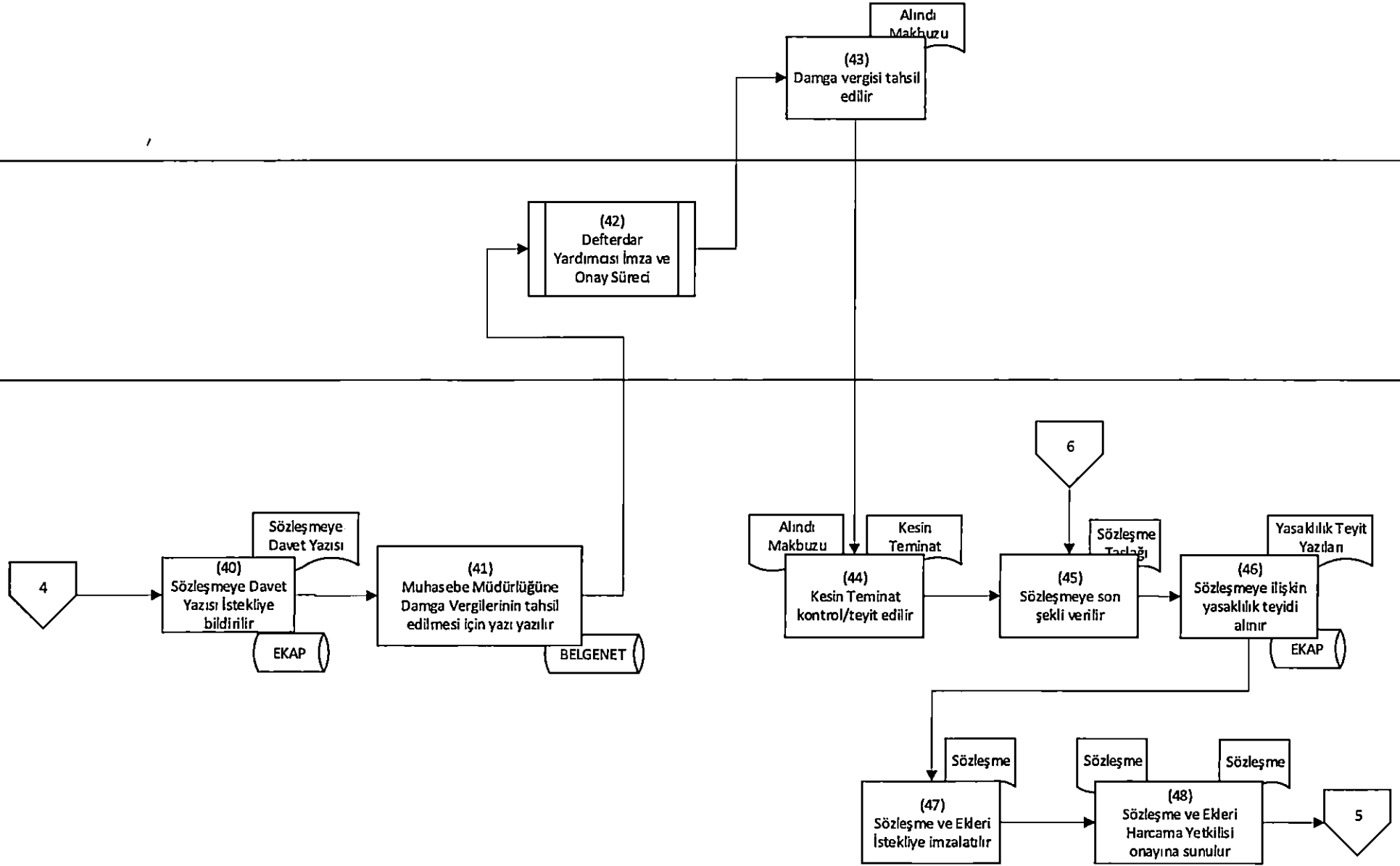
Mali İşler Servisi Personeli

Harcama Yetkilisi



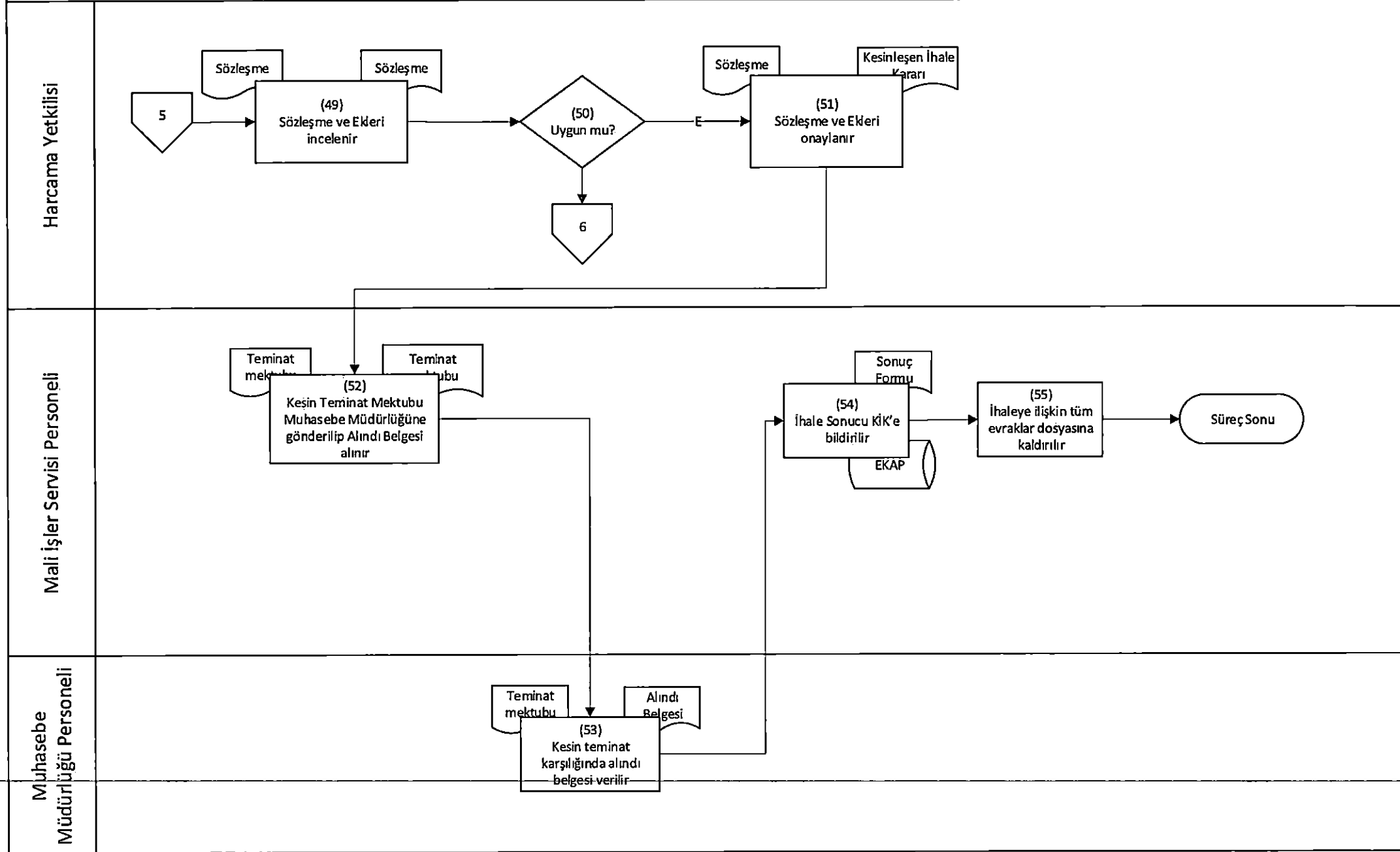
Muhasebe
Müdürlüğü
PersoneliGerçekleştirme
Görevlisi

Mali İşler Servisi Personeli



Pazarlık Usulü İhale İşlemleri Süreci

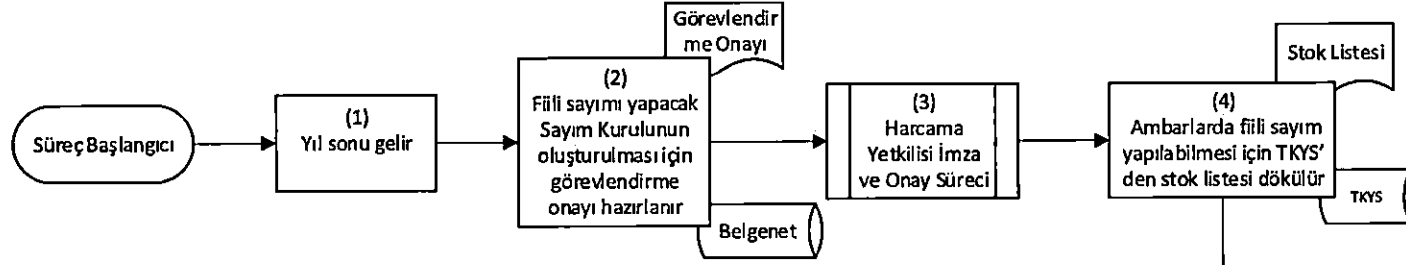
6/6



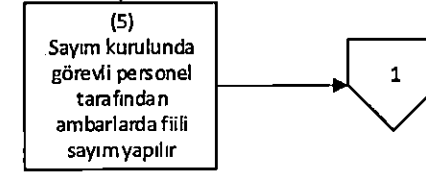
Taşınır Yönetim Hesabının Hazırlanması İşlem Süreci

1/5

Taşınır İşlem Personeli



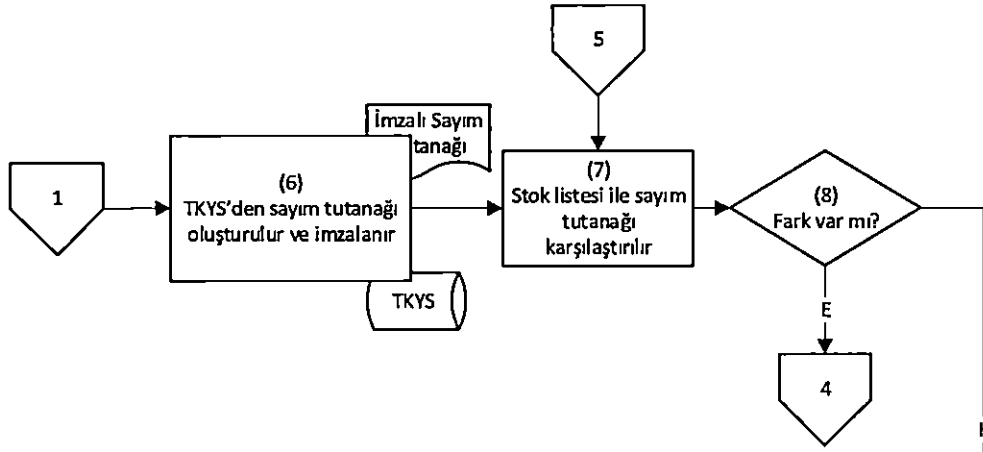
Sayım Kurulu



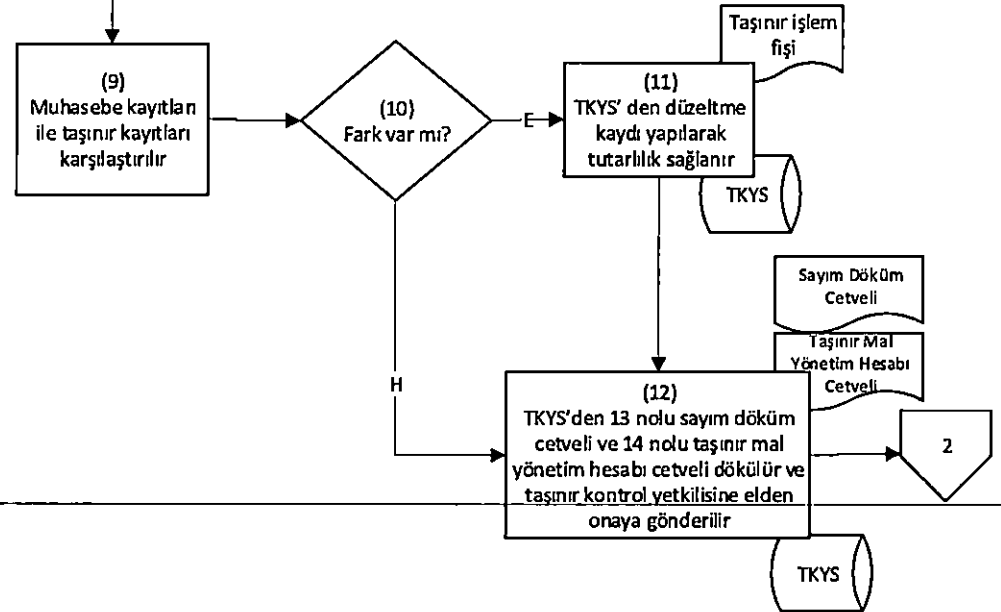
Taşınır Yönetim Hesabının Hazırlanması İşlem Süreci

2/5

Sayım Kurulu



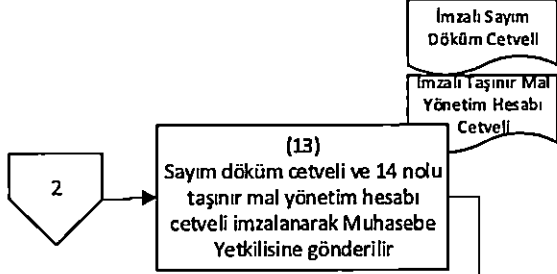
Taşınır İşlem Personeli



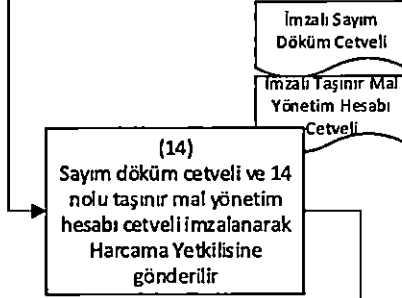
Taşınır Yönetim Hesabının Hazırlanması İşlem Süreci

3/5

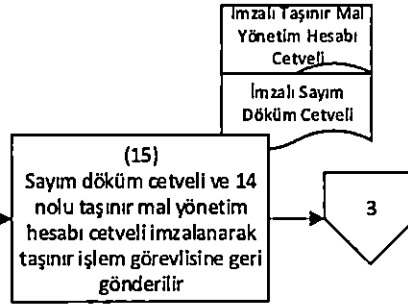
Taşınır Kontrol Yetkilisi



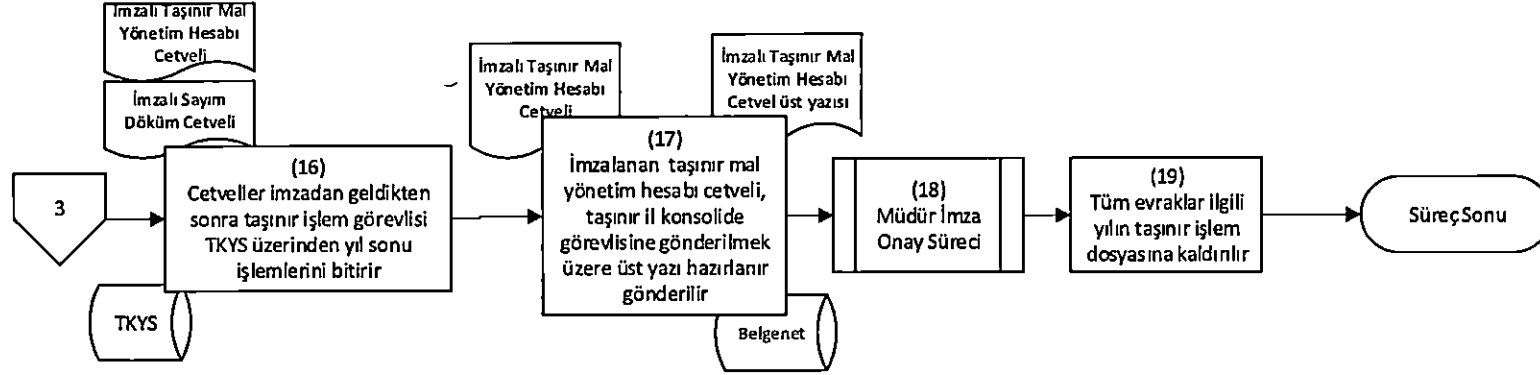
Muhasebe Yetkilisi



Harcama Yetkilisi



Taşınır İşlem Personeli



Taşınır İşlem Personeli

